

Rack Mounted Optical Switch (OPTICO 7206 Series)

Widely used in optical fiber loop, automatic measurement, and remote monitoring of optical fiber network.



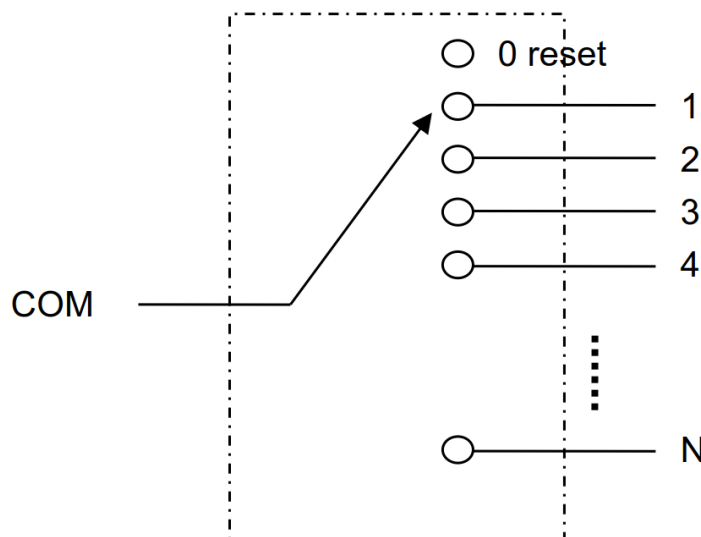
• Description:

Multi-channel mechanical optical switch is a kind of optical control device, which plays the role of controlling optical path and converting optical path. It plays an important role in optical communication applications. Optical switch master. The OPTICO 7206 series on-frame optical switch is also an optical path control device, mainly used in multi-path optical control, LAN multi-light detector automation in optical transmission systems, Switching and optical sensing multi-point dynamic monitoring system, to achieve all-optical level route selection, wavelength selection and self-healing protection functions.

• Features:

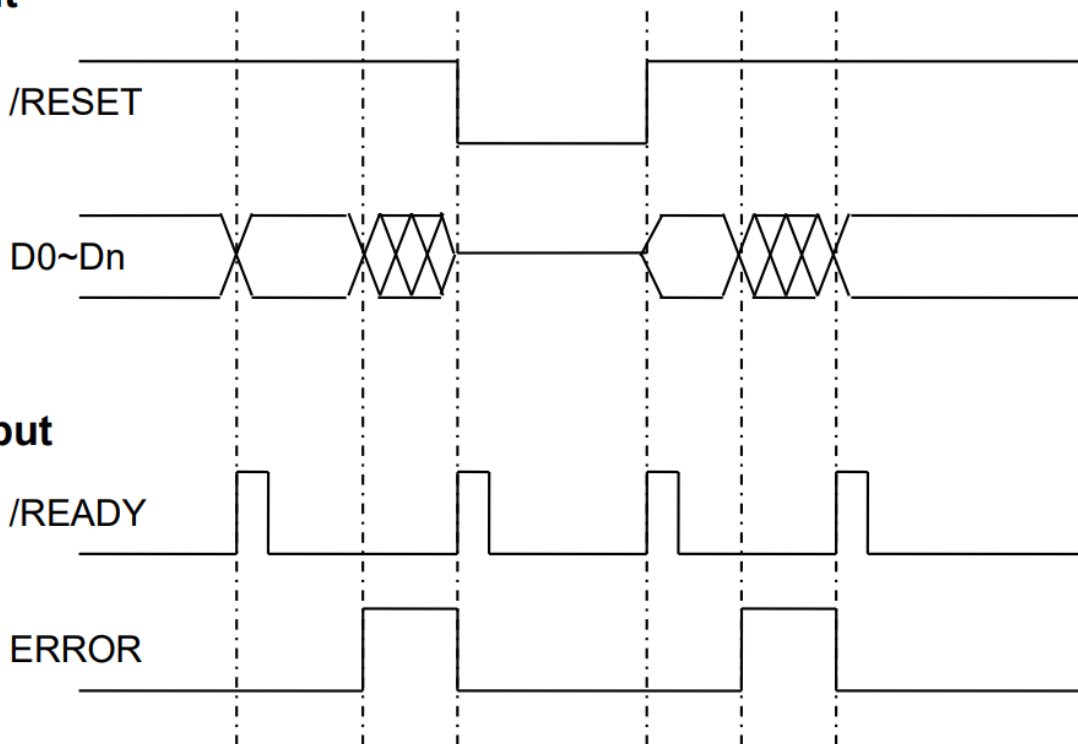
- The number of channels can reach 128
- Low loss and high reliability
- Simple parallel interface control
- Modular design
- Multichannel optical monitoring in optical transmission system
- It has the characteristics of small insertion loss and fast switching speed.
- LCD display, very intuitive display data, easy to operate.
- It can be used for remote monitoring of optical fiber network.

• Optical path diagram :



- Time sequence diagram:

Input



- Specifications:

Items	Specifications	
Work Wavelength(nm)	1260~1650nm	850/1300nm
Testing wavelength(nm)	1310/1500nm	850nm
Insertion loss(dB)	Typ.:<1.0, Max:<1.2	
Return loss(dB)	SM≥50 MM≥30	
Crosstalk(dB)	SM≥55 MM≥35	
PDL(dB)	≤0.05	
WDL(dB)	≤0.25	
TDL(dB)	≤0.25	
Repeatability (dB)	≤±0.05	
Fiber Type	SM(9/125)	MM(50/125um, 62.5/125um)

• Specifications:

Items	Specifications
Switch over time(ms)	≤10 (Adjacent channel)
Monitoring port	RJ45, RS-232
Connector Type	FC/PC, FC/APC
Working power supply	AC:85~264V(50/60HZ)/ DC:36~72v
Max Optical Power(mW)	≤500
Work Temperature(°C)	-10~+60
Storage Temperature(°C)	-40~+80
Relative humidity (%)	5~95
Dimensions(mm)	Standard 19 inches(1U)

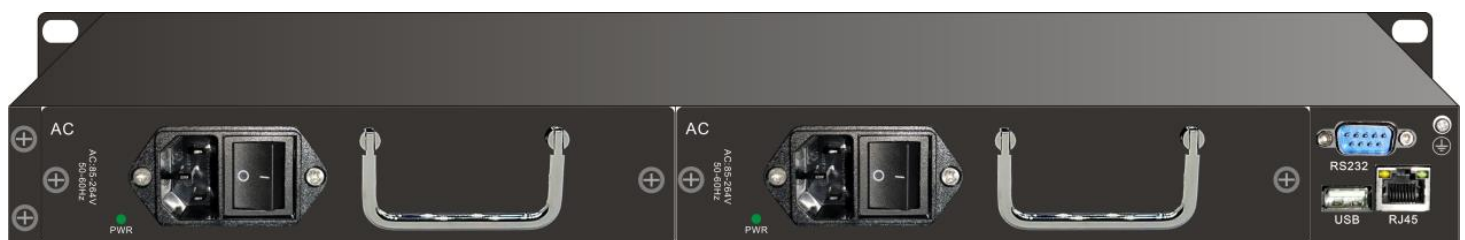
• Instructions for User:

- 1.1 Product Structure Introduction
 - 1.1 .1 Structure of the front panel



- (1) LCD display: display the device address, current channel and related information.
- (2) ▲ -- up key; ▼ -- Down key; Enter -- OK key; Esc -- Cancel the key.
- (3) Power indicator PWR1, PWR2: working power indicator.
- (4) Description of optical interface: The I/O ports on the device panel are public ports, 1, 2, 3..... And 16 are channel numbers respectively.

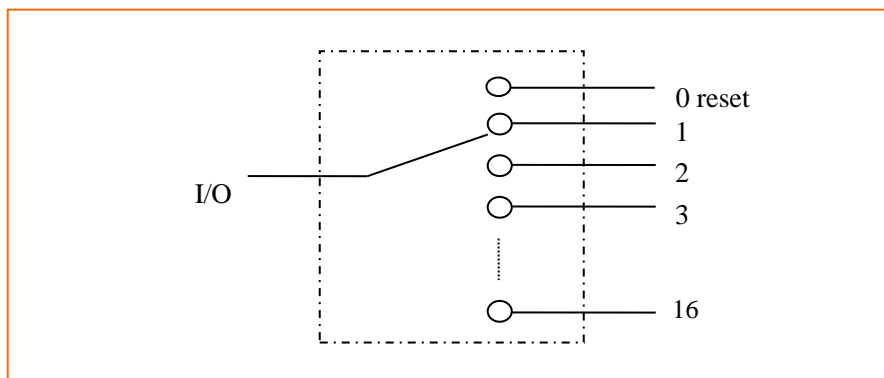
- 1.1 .2 Rear Panel Description



- (1) DC and AC power supply interfaces: input interfaces of the equipment working AC and DC power supply.
- (2) RJ45 Ethernet port, RS-232 serial port: The device monitoring data communication interface.

• 1.2 Device Connection Description

• 1.2.1 Internal optical path schematic description



• Ordering information: OP-7206-1×24-A-B-C-D-E-F-G-H

• Example: OP-7206-1×24-1-L-ETH/232-SM-FS-220/48-02-FA

A	B	C	D	E	F	G	H
Type	Mode of display	Mode of control	Fiber Type	Work Wavelength	Power supply	Size and port	Connector type
1: Motor 2: Relay 3: MEMS 4: Magnet 12: Motor/Relay X: Others	L: LCD K: KEY	232: RS232 ETH: Ethernet ETH/232: Ethernet/RS232 X: Others	SM: SM,9/125 M5: MM,50/125 M6: MM,62.5/125 X: Others	85: 850±40nm O: O band(1260~1360nm) C: C band(1530~1565nm) L: L band(1565~1625nm) U: U band(1625~1675nm) FS: 1260~1650nm FS2: 1400~1700nm	220: AC 220V 48: DC -48V 220/48: AC 220V&DC-48V	02: 483×330×88mm	OO: None LP: LC/PC LA: LC/APC FP: FC/PC FA: FC/APC SP: SC/PC SA: SC/APC STP: ST/PC STA: ST/APC X: Others